

## Academic Affairs Quick Reference Guide

### Clinical Psychology Department

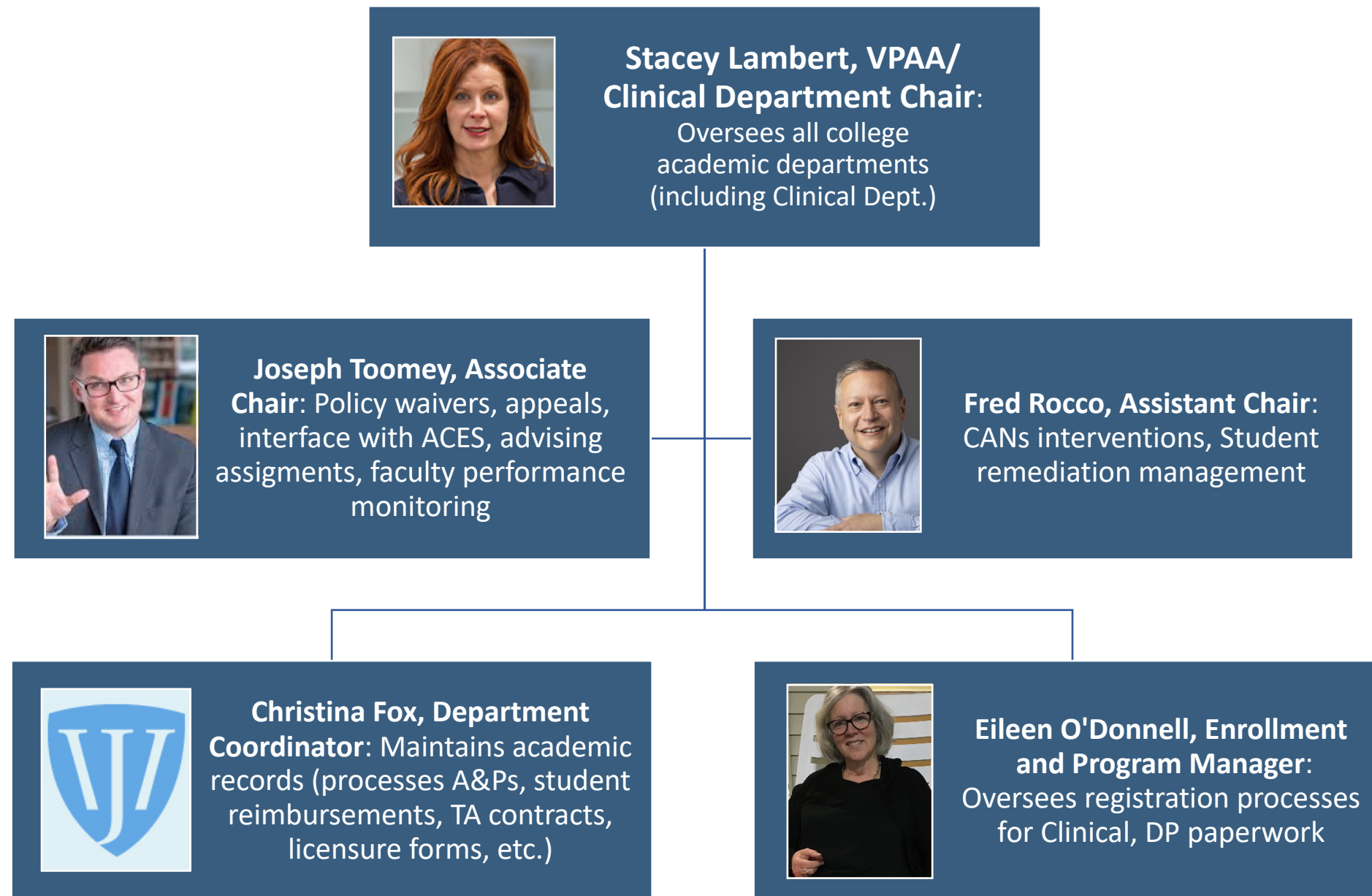
**Stacey Lambert, PsyD**, Vice President for Academic Affairs; Chair, Clinical Psychology Department

**Joseph Toomey, PhD**, Associate Chair, Clinical Psychology Department

**Fred Rocco, PhD**, Assistant Chair, Clinical Psychology Department

**Christina Fox**, Department Coordinator

**Eileen O'Donnell**, Enrollment and Program Manager



## Academic Affairs Quick Reference Guide

### Clinical Psychology Field Education Department

**Laura Bourgeois, MA**, Department Coordinator, Field Education Department

**Cheryl MacDonald, MBA**, Associate Director of Programming and Site Development

**Mary Ann Mullin, PhD**, Director of Field Education

**Karen Stufflebeam, PsyD**, Associate Director of Field Education

**Angela Wilbur, PsyD**, Director of Training

